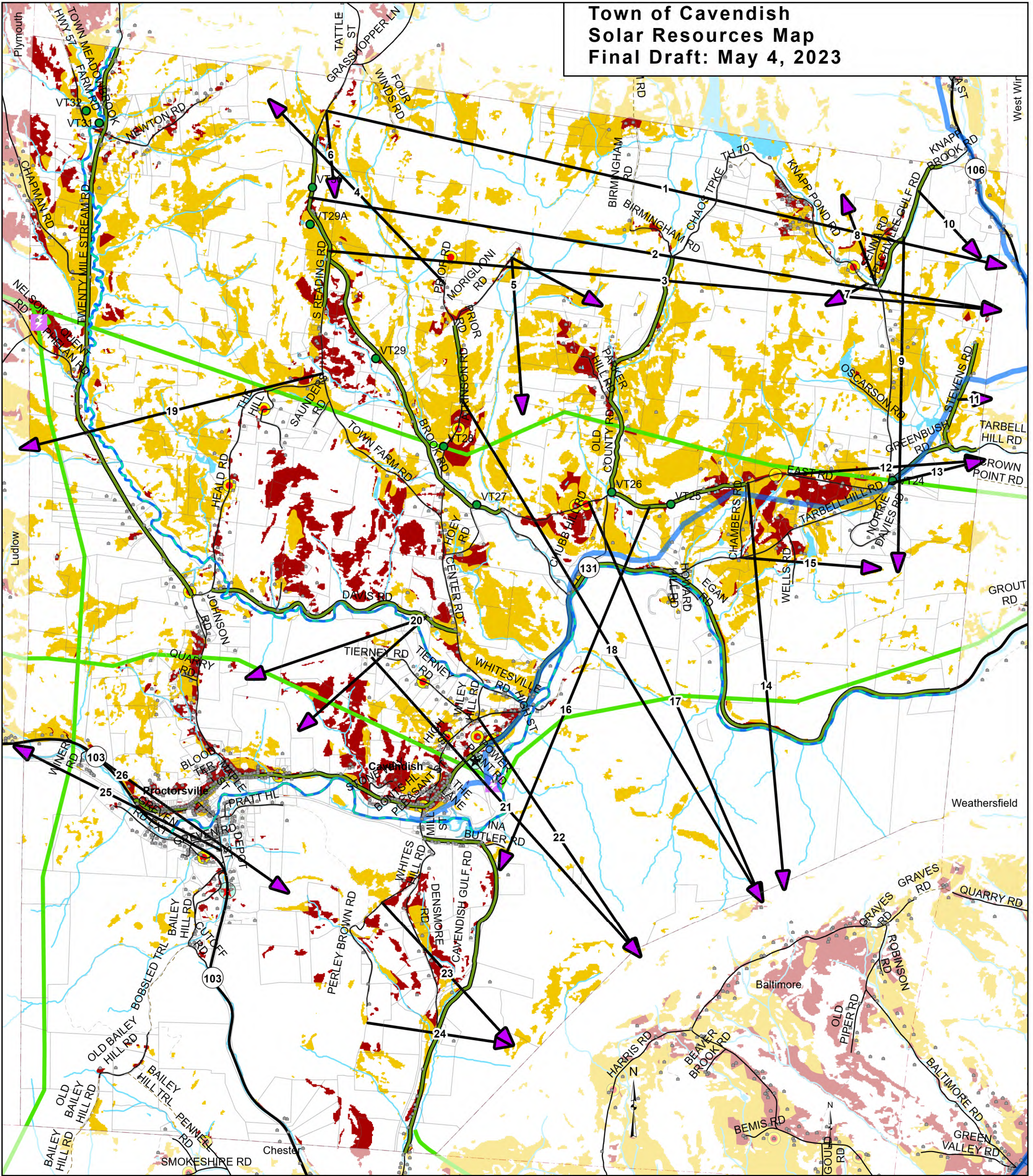


Town of Cavendish Solar Resources Map Final Draft: May 4, 2023



This map shows the existing solar energy production according to capacity for electricity generation and organization type. This map also shows the potential for ground-mounted solar energy production considering

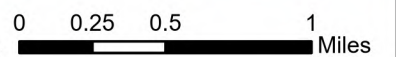
- Statewide analysis of solar potential
- Statewide, Regional and Local constraints which prevent or may impact development of solar energy generation facilities

The VT Public Service Board divides applications for a Certificate of Public Good by net metering system capacity: 15kW or less, over 15kW but less than 150kW, and 150kW or more.

Solar potential for ground-mounted systems was calculated to consider the following conditions: slope direction, slope steepness, and radiation values from ESRI solar analyst. For more info see <http://vcgi.vermont.gov/opendata/act174>

Known constraints include areas that should not be developed with renewable energy generation facilities. Possible constraints include areas that may impact the siting of renewable energy generation facilities, but do not necessarily prevent their development. In addition to constraints listed in the March 2017 Regional Energy Planning Standards, the Town has identified scenic resources in the Town Plan and accompanying Town Constraints Map.

The Regional Energy Planning Standards are available at <http://publicservice.vermont.gov/content/act-174-recommendations-and-determination-standards>



Data sources: Solar Facilities (VT Energy Dashboard), Sites listed on Atlas on 02/03/2017), Prime and Secondary Solar Potential (VCGI 2017) (Town Constraints for TO BE DEFINED), Substations (BCRC 2015 and SWCRPC 2016), Three Phase Electricity Lines (BCRC 2015), Transmission Lines (RPC 2016), Waterbodies (VHD 2008), Roads (VTrans 2018), Town Boundary (VCGI 2012), Scenic Roads and Rivers (RPC 2019) Visual Access (RPC 2012 using data originally created by The Cavendish Partnership in March 1986)

VT State Plane, Meters, NAD 83

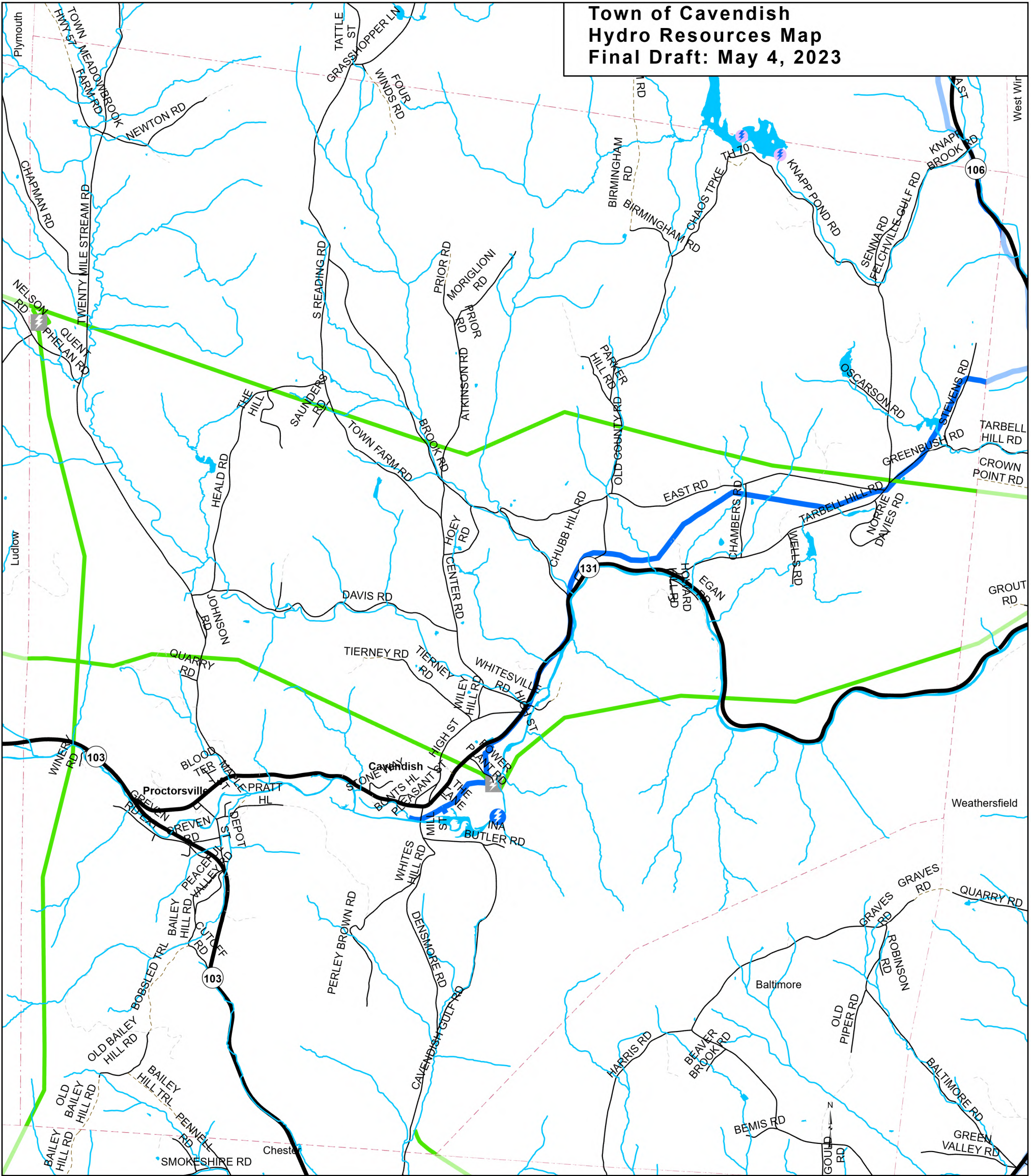


**Mount Ascutney
Regional Commission**
P.O. Box 320, Ascutney, VT 05030
802-674-9201 www.marcvt.org

For planning purposes only
Not for regulatory interpretation
Drawn May 4, 2023

- | | | |
|---|--|--------------------------|
| Scenic River or Stream | Electric Transmission Line | Visual Access Arrow |
| Scenic Road | Three Phase Electricity Distribution Lines | Town boundary |
| Business, Institution or Municipality with a capacity of 150kW or more | Parcels | Estes |
| Business, Institution or Municipality with a capacity of 15kW or less | Prime solar resource | Crown Point Road Markers |
| Business, Institution or Municipality with a capacity of 15.1kW - 150kW | Secondary solar resource | River or Stream |
| Residential, Capacity of 150kW or more | State Highway | Lake or Pond |
| Residential, Capacity of 15kW or less | Class 1 Town Highway | |
| Residential, Capacity of over 15kW but less than 150kW | Class 2 and 3 Town Highway | |
| Substation | Class 4 Town Highway | |
| | Forest Road, Legal Trail, or Private Road | |

Town of Cavendish Hydro Resources Map Final Draft: May 4, 2023



- Existing Hydro Sites
- Potential Hydro Sites**
- Undeveloped hydro potential over 50 KW
- Undeveloped hydro potential less than 50KW
- Potential with penstock
- River or Stream
- State Highway
- Class 1 Town Highway
- Class 2 and 3 Town Highway
- Class 4 Town Highway
- Forest Road, Legal Trail, or Private Road
- Substation
- Electric Transmission Line
- Three Phase Electricity Distribution Lines
- Lake or Pond
- River or Stream

This map shows the potential for hydro energy production considering

- Statewide analysis of solar potential
- Statewide, Regional and Local constraints which prevent or may impact development of solar energy generation facilities

Potential hydro electric generation sites were identified by using existing dam location data for all of Vermont and then estimating electric production. Estimating is an inexact science, and estimates can vary widely between different studies. For more info see www.vtenergyatlas-info.com/hydro/methodology

The Regional Energy Planning Standards are available at <http://publicservice.vermont.gov/content/act-174-recommendations-and-determination-standards>



0 0.25 0.5 1 Miles

Data Sources: Existing and Potential Hydro Sites (VSJF 2010), Substations (BCRC 2015 and SWCRPC 2016), Three Phase Electricity Lines (BCRC 2015), Transmission Lines (RPC 2016), Waterbodies (VHD 2010), Roads (VTrans 2018), Town Boundary (VCGI 2012).

VT State Plane, Meters, NAD 83

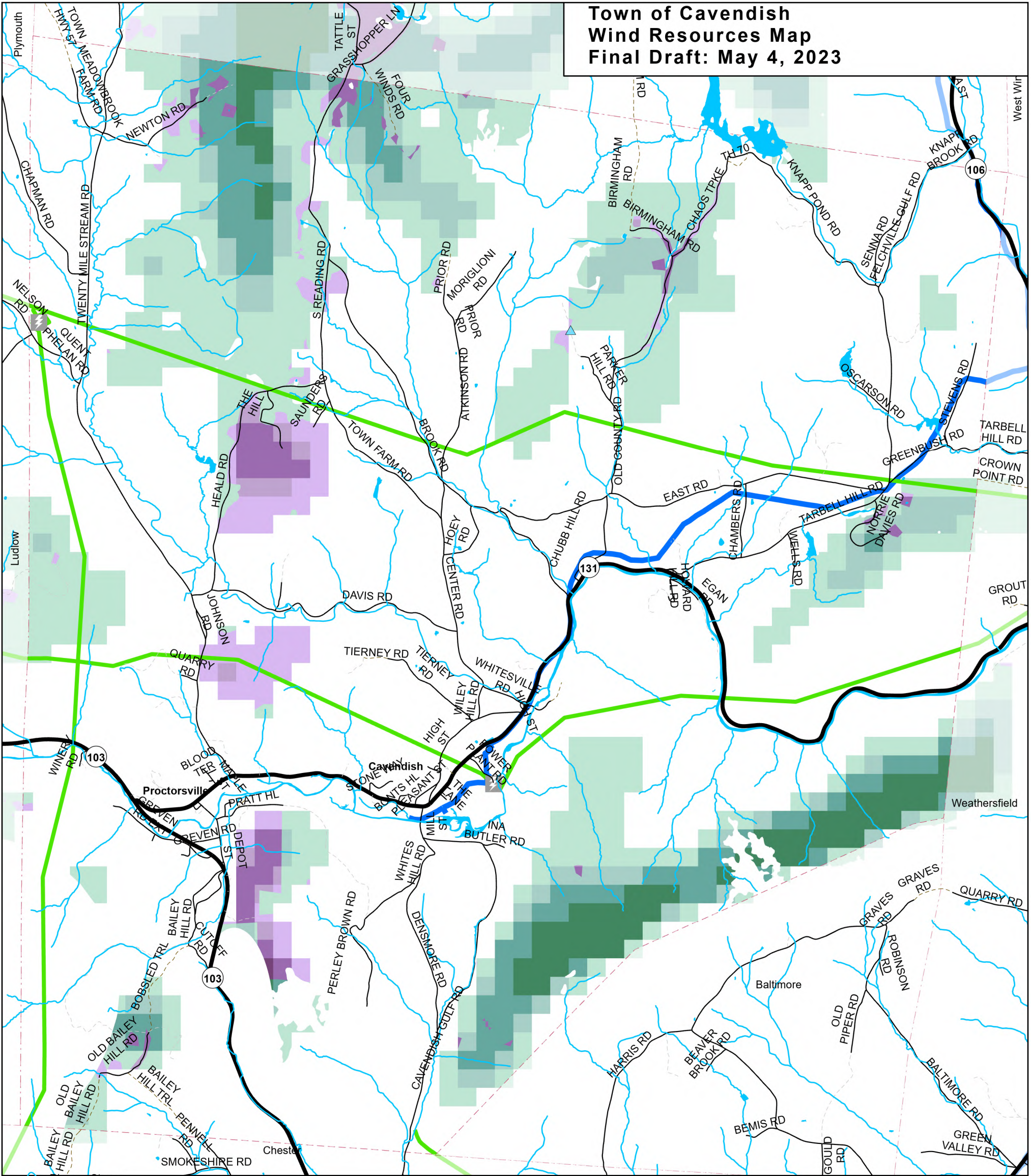


**Mount Ascutney
Regional Commission**

P.O. Box 320, Ascutney, VT 05030
802-674-9201 www.marvct.org

For planning purposes only
Not for regulatory interpretation
Drawn May 4, 2023

Town of Cavendish Wind Resources Map Final Draft: May 4, 2023



- River or Stream
- State Highway
- Class 1 Town Highway
- Class 2 and 3 Town Highway
- Class 4 Town Highway
- Forest Road, Legal Trail, or Private Road
- Water_VHDCARTO_poly
- Prime Wind Potential**
- 10.070000 - 10.94 mph
- 10.940001 - 12.10
- 12.100001 - 13.82
- 13.820001 - 16.46
- 16.460001 - 25.70
- Secondary Wind Potential**
- 10.070000 - 11.45 mph
- 11.450001 - 12.82
- 12.820001 - 14.32
- 14.320001 - 16.46
- 16.460001 - 25.70
- Residential Wind Facility
- Commercial Wind Facility
- Substation
- Electric Transmission Line
- Three Phase Electricity Distribution Lines
- Lake or Pond

This map shows the existing wind energy general sites and the potential for wind energy production considering

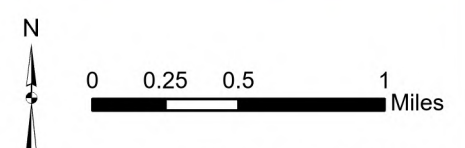
- Statewide analysis of wind potential
- Statewide, Regional and Local constraints which prevent or may impact development of wind energy generation facilities

Potential wind speeds were calculated using the TrueWind Solutions MesoMap wind mapping system. For more info see www.vtenergyatlas-info.com/wind/methodology

There are currently no commercial wind facilities in the area.

Known constraints include areas that should not be developed with renewable energy generation facilities. Possible constraints include areas that may impact the siting of renewable energy generation facilities, but do not necessarily prevent their development. In addition to constraints listed in the March 2017 Regional Energy Planning Standards, In addition to constraints listed in the March 2017 Regional Energy Planning Standards, the Town has identified scenic resources in the Town Plan and accompanying Town Constraints Map.

The Regional Energy Planning Standards are available at <http://publicservice.vermont.gov/content/act-174-recommendations-and-determination-standards>



Data sources: Wind Facilities (VT Energy Dashboard, Sites listed on Atlas on 02/03/2017), Prime and Secondary Wind Potential (VCGI 2017) (Regional Constraints and Town Constraints for TO BE DEFINED), Substations (BCRC 2015 and SWCRPC 2016), Three Phase Electricity Lines (BCRC 2015), Transmission Lines (RPC 2016), Waterbodies (VHD 2010), Roads (VTrans 2018), Town Boundary (VCGI 2012).

VT State Plane, Meters, NAD 83



**Mount Ascutney
Regional Commission**
P.O. Box 320, Ascutney, VT 05030
802-674-9201 www.marcvt.org

For planning purposes only
Not for regulatory interpretation
Drawn May 4, 2023